

WATER SHUT OFF VALVES

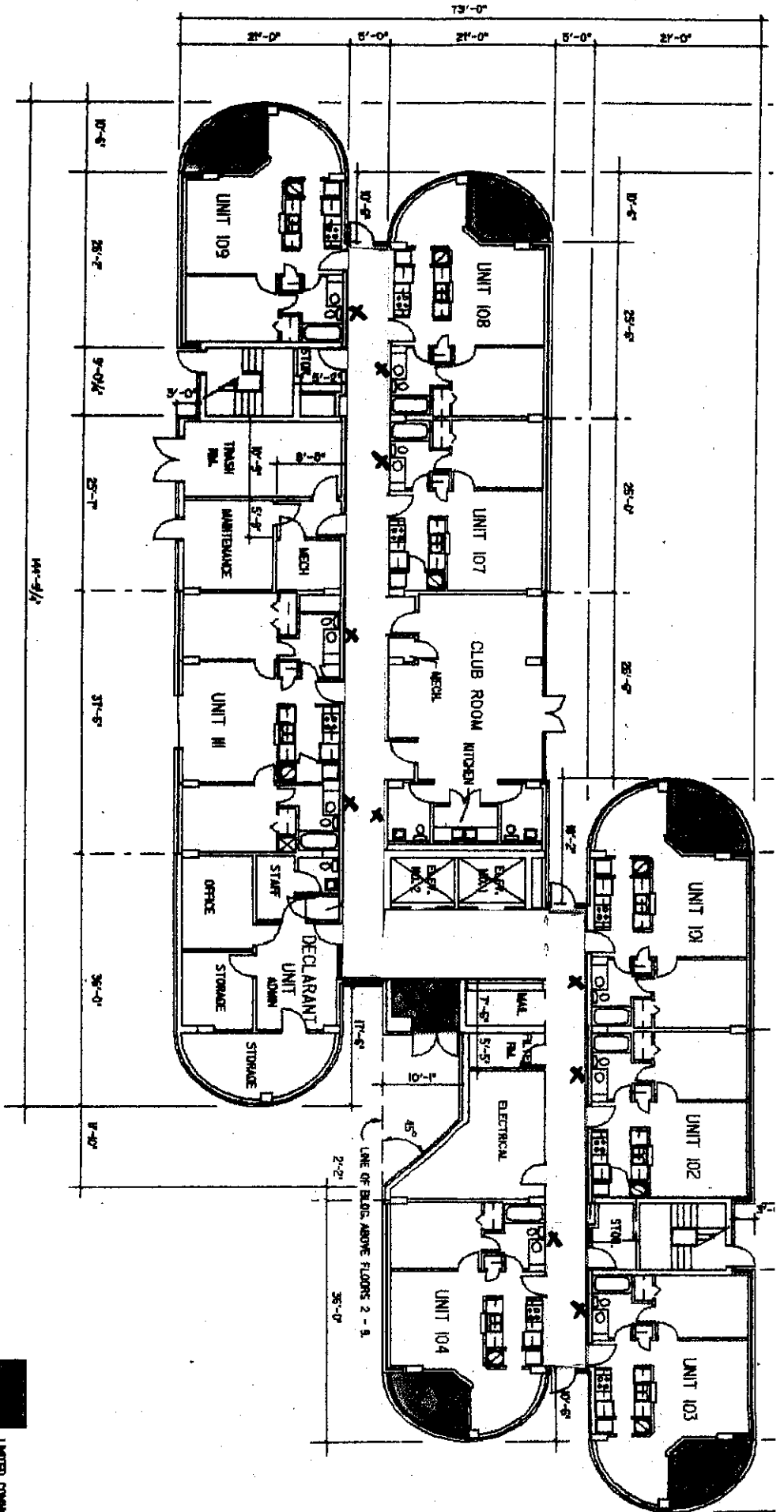
SEE THE ATTACHED BUILDING FLOOR PLANS TO HELP
LOCATE THE VALVES THAT ARE IN THE HALLWAYS

1st Floor: Valves are above the ceiling tiles in the hallways in line with the bathrooms for the respective Unit. See the attached building floor plan to help locate the valve.

Floors 2-9: Valves are above the ceiling tiles in the hallways on the EVEN FLOORS in line with the bathrooms for the respective Unit. The respective even floor valve shuts off that Unit and the Unit above. For example: The valve outside of Unit 201 shuts off 201 and 301, and 401 shuts off 401 and 501 and so forth. See the attached building floor plan to help locate the valve.

If there is an emergency and the source of water flow is from your Unit, immediately shut off the water. Call 779-1844 during the greeting Press the appropriate number for Maintenance Emergencies, this will dial our 24 hour answering service. Remember to explain what happened to the other resident affected since their water was shut off too.

For non-emergencies that require the water to be temporarily shut off, please give the Unit resident affected sufficient notice.



GROUND FLOOR

NOTE:
EXTERIOR AND UNIT DIMENSIONS
TYPICAL FOR ALL FLOORS.

LIMITED COMMON

ROOM NUMBER LEG

809
FLOOR NO. UNIT NO.



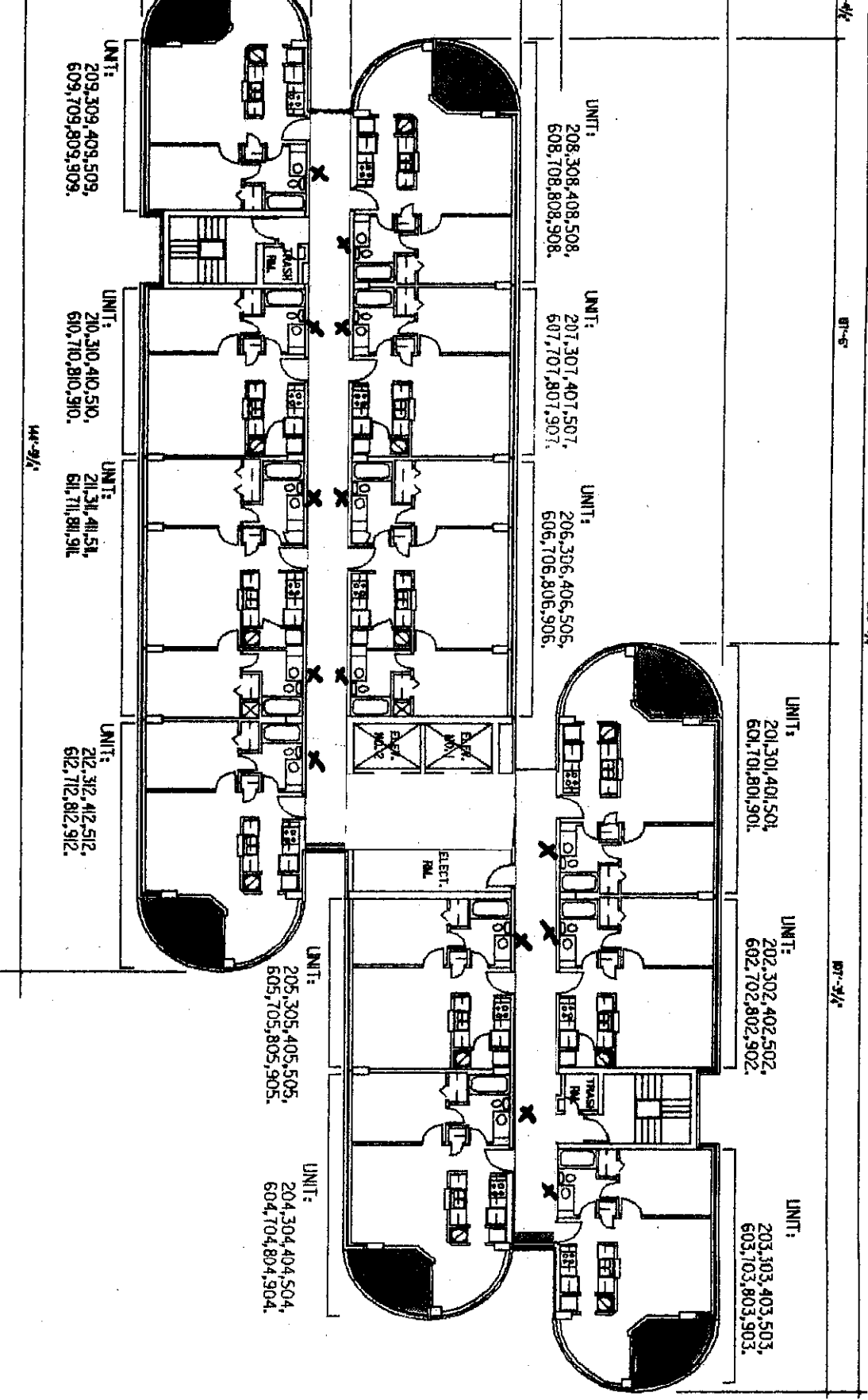
ENGINEER & ARCHITECT
 1500 AVENUE OF THE STARS
 SUITE 1000
 FORT MYERS, FL 33907
 TEL: 888-488-8888
 FAX: 888-488-8889

DATE: _____
 DRAWING NO.: _____
 PROJECT NO.: _____
 SHEET NO.: _____
 TOTAL SHEETS: _____

CONTRACTOR
 STEVENSON & SULLIVAN
 1500 AVENUE OF THE STARS
 SUITE 1000
 FORT MYERS, FL 33907
 TEL: 888-488-8888
 FAX: 888-488-8889

NO.	REVISION	DATE

W.M. SMITH



TYPICAL FLOOR
 5/14/07